

# Network 21 Missions - Culture Shock Trip

VOLUME 2, ISSUE 2

JUNE 2011

## NETWORK 21 MISSIONS

## CULTURE SHOCK

### Journey On!

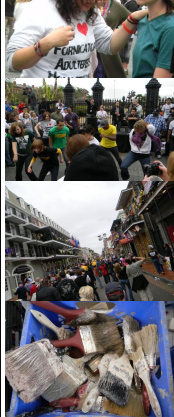
So far, 2011 has definitely been a different year from last year, and you know, different is a good change of pace for us at N21M. This time last year, we had the second part of the Culture Shock Trip 1 out and we were totally focused on preparing and guiding the trip. Now, we have been focusing on preparing and guiding the ministries next steps.

Last newsletter, we talked about where we felt God leading us with: the ministry, the CS trips, and even partnering & starting an internship program. Even though we're almost half way through the 2011 year, we are still focusing on those things. We have been able to go on a few mission trips, missed a few trips, and still planning more trips. Also, we are planning to promote the next CS trip for summer of 2012 and the internship program is still unfolding.

The two trips we have been on this year were Mardi Gras Outreach & Matamoras, Mexico.

### Mardi Gras 2011 OUTREACH

We were able to join up with Wayne & Kristi Northrup and their team down in New Orleans, LA for their annual Mardi Gras Outreach. Every year they have a group of "twenty-somethings" from around the USA and even Canada to do a massive outreach to the people at Mardi Gras & do humanitarian/relief work around the city.



This trip was probably one of the best missions trips that we've been on in a while just due to the passion and love of

Christ shown through various ways. This will definitely be a place that we'll be taking a group to every year!

### Matamoras Mexico

After this trip was rescheduled due to the current conditions in Mexico, we finally got to Matamoras. We joined up with a few men from a local church, The Oaks in Red Oak, TX, to help out with some construction needs on some new building at the bible school there which is headed by Missionary Mike McGee. We helped finish putting up doors, build the stage, put down trim, put up some of the ceiling and other finishing touches on the building. Construction trips sometimes feels like more work than ministry but by helping get this building finished, we will help them be able to raise up and train world changers!



### UPCOMING TRIPS

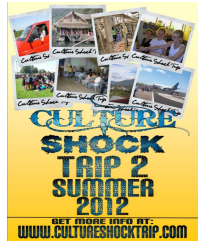
Here is a list of upcoming trips on the calendar, which some are still needing to be filled.

- \* Panama - Construction Trips, Fabrication Trips, Church Planting Trips, and Surfing & Skateboarding Outreach Trips
- \* Peru - Construction Trips (some locations require hiking and camping, but not all)
- \* Galapagos Islands - Dance and Drama Outreach

There are MANY other trips that we can put on here that are needing team, so please visit the N21M website to see a full list of places and needs. We are needing teams: some to plant, some to

water, some to prepare and some to harvest! We all must do our part in the work!

We want to start promoting and pushing two of our ministries that will be starting next year. First, we want to start promoting Culture Shock Trip 2! We will have our CS Extreme & Express trips taking off Summer of 2012. Even though that's just a year way, we want to make sure as many people as wants to go, have the opportunity. For more info, visit the Culture Shock website.



Second, we want to promote a new adventure that some of our missionaries are starting with N21M. Chad & Valerie are starting a ministry called "Self Ignition". They will be doing school assemblies in Jr. High & High Schools and even College groups around



the area! Not only will they be addressing current issues, they will be offering different trips for the students to go on where they will have the opportunity to learn about Jesus. To get the full details, visit their website: [www.selfignition.com](http://www.selfignition.com). Also, please be praying for guidance, strength, and the extra financial support they will need to reach out to tomorrow's leaders!

If you would like receive our future newsletters via e-mail, please visit our website and fill out the "E-Newsletter Contact Form" located on our "Contact" page.

To see the list of missionaries, partners, affiliates, and projects please go visit Network 21 Missions & Culture Shock Trip websites.

NETWORK 21 MISSIONS  
CULTURESHOCK  
P.O. Box 793  
Waxahachie, TX 75168



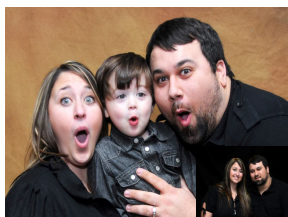
Rodney & Voni Johnston

Contact:  
rodney@network21missions.com  
voni@network21missions.com



Richard & Carol Miller

Contact:  
richard@network21missions.com



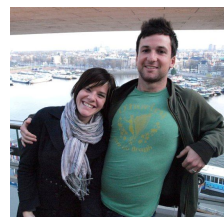
Chad & Valerie Trinkle

Contact:  
chad@network21missions.com  
valerie@network21missions.com



Jeff & Crystal Martin

Contact:  
jcmartin@network21missions.com



Lukus & Bethany Hess

Contact:  
pukushess@yahoo.com  
bethanyhess@gmail.com

We want to thank **ALL** of our prayer and financial supporters.  
With out you partnering with us, we couldn't do what we do. Please continue to cover us with your prayers.  
We know that this is the year to make a difference for God!

Websites: [www.network21missions.com](http://www.network21missions.com) or [www.cultureshocktrip.com](http://www.cultureshocktrip.com)  
Email: [info@network21missions.com](mailto:info@network21missions.com) or [shockinfo@network21missions.com](mailto:shockinfo@network21missions.com)  
Mail: P.O. Box 793 Waxahachie, TX 75168

You can donate to Network 21 Missions and Culture Shock Trip by either going though our secure on-line donations page or mailing directly to Network 21 Missions. Please specify if you're donating to a certain missionary or project. *All donations are tax-deductible.*  
*Network 21 Missions is recognized by the IRS as a 501(c)3 non-profit organization.*